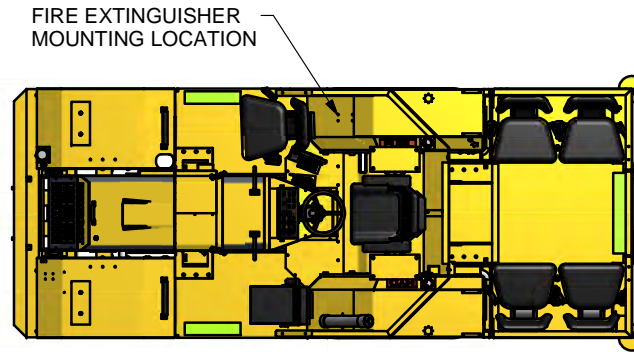
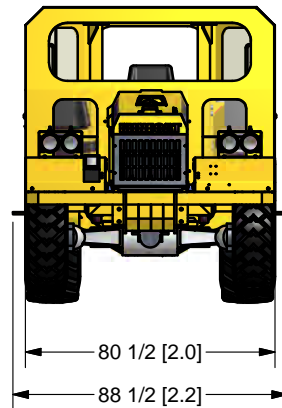


CSA CERTIFIED  
ROPS/FOPS CAB



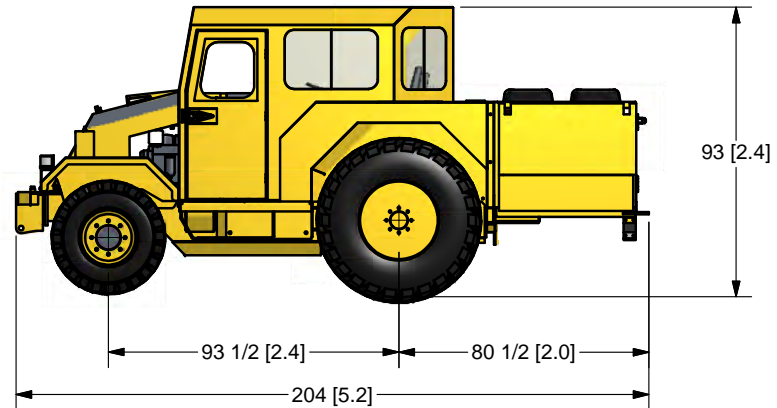
FIRE EXTINGUISHER  
MOUNTING LOCATION

TOP VIEW SHOWN WITH CAB REMOVED



80 1/2 [2.0]

88 1/2 [2.2]



93 [2.4]

93 1/2 [2.4]

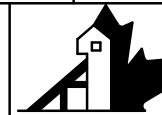
80 1/2 [2.0]

204 [5.2]

**NOTE 1:** DUE TO DESIGN UPGRADES  
SOME DIMENSIONS AND COMPONENTS  
MAY BE SUBJECT TO MINOR CHANGES

**NOTE 2:** OTHER OPTIONAL ACCESSORIES  
ARE AVAILABLE

SCALE:	MATERIAL:
DRAWN BY: T. LANGMAN	<p>UNLESS OTHERWISE NOTED TOLERANCING IS AS FOLLOWS: FRACTIONAL = +/- 1/16 1 DECIMAL = +/- .030 2 DECIMAL = +/- .010 3 DECIMAL = +/- .005 BREAK ALL SHARP EDGES</p>
REVIEWED BY:	
CHECKED BY:	
DATE: 13/07/2010	



**Industrial  
Fabrication Inc.**  
Sudbury, Ontario, Canada  
Phone: (705) 523-1621  
Fax: (705) 523-0565

TITLE  
MINECAT MC 100E 7 MAN WITH 3 PERSON  
CAB GENERAL ARRANGEMENT

PART # IFID99043

REV