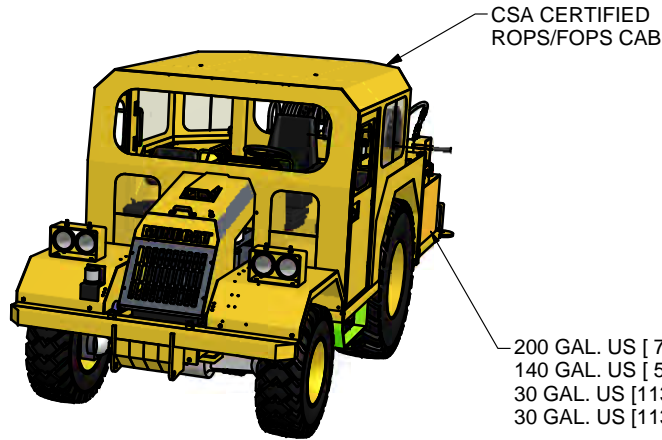


4

3

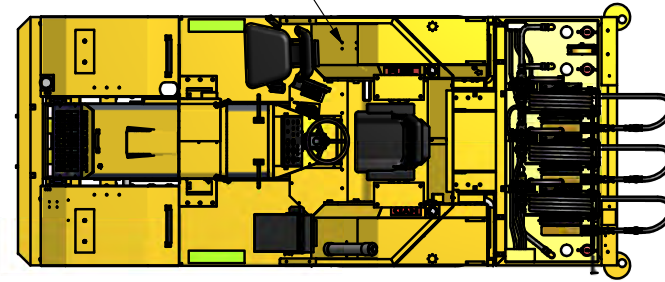
2

1

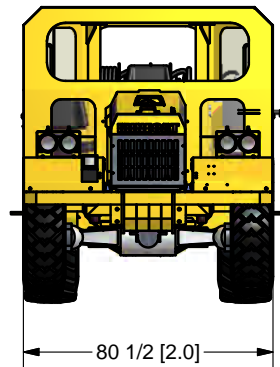


200 GAL. US [ 757 litre] TANK CAPACITY TOTAL  
 140 GAL. US [ 530 litre] DIESEL FUEL  
 30 GAL. US [113 litre] HYDRAULIC OIL  
 30 GAL. US [113 litre] MOTOR OIL

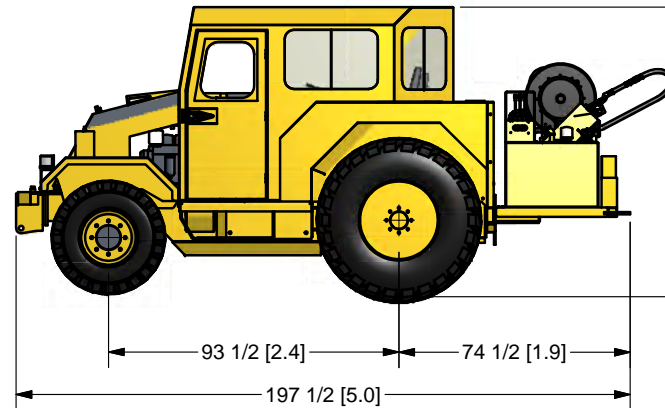
FIRE EXTINGUISHER MOUNTING LOCATION



TOP VIEW SHOWN WITH CAB REMOVED



80 1/2 [2.0]



93 [2.4]

93 1/2 [2.4]

74 1/2 [1.9]

197 1/2 [5.0]

**NOTE 1:** DUE TO DESIGN UPGRADES  
 SOME DIMENSIONS AND COMPONENTS  
 MAY BE SUBJECT TO MINOR CHANGES

**NOTE 2:** OTHER OPTIONAL ACCESSORIES  
 ARE AVAILABLE

SCALE: MATERIAL:

DRAWN BY: T. LANGMAN

REVIEWED BY:

CHECKED BY:

DATE: 14/07/2010

UNLESS OTHERWISE NOTED  
 TOLERANCING IS AS FOLLOWS:  
 FRACTIONAL = +/- 1/16  
 1 DECIMAL = +/- .030  
 2 DECIMAL = +/- .010  
 3 DECIMAL = +/- .005  
 BREAK ALL SHARP EDGES



**Industrial  
 Fabrication Inc.**  
 Sudbury, Ontario, Canada  
 Phone: (705) 523-1621  
 Fax: (705) 523-0565

TITLE  
 MINECAT MC 100E 3 MAN LUBE TRUCK  
 GENERAL ARRANGEMENT

PART # IFID99169

REV

4

3

2

1

B

B

A

A