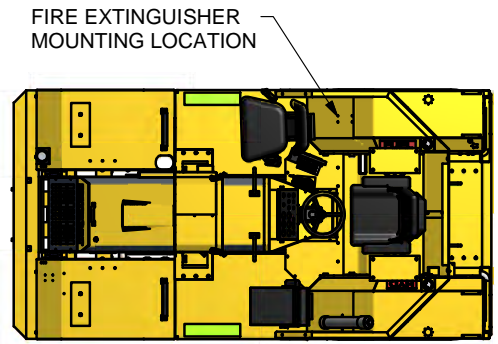
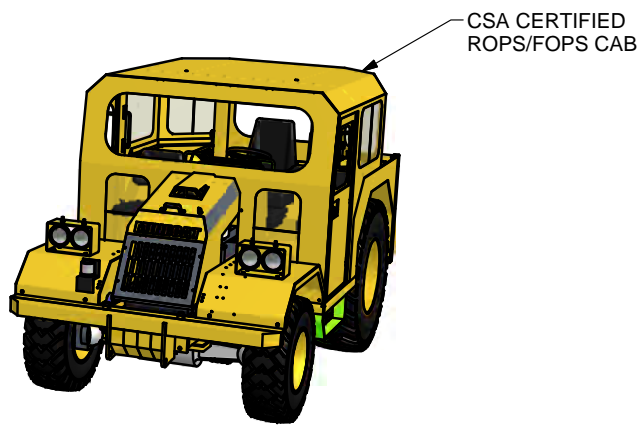
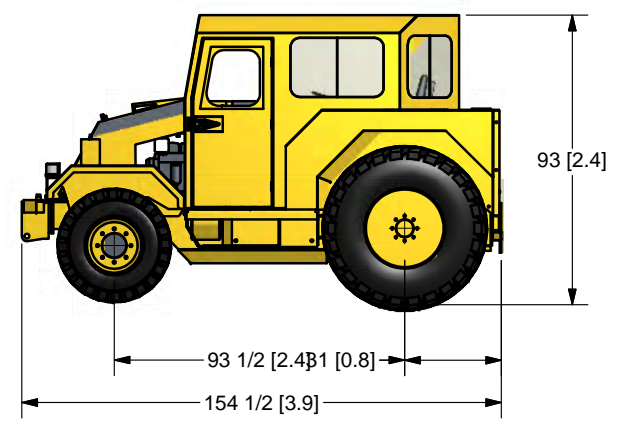
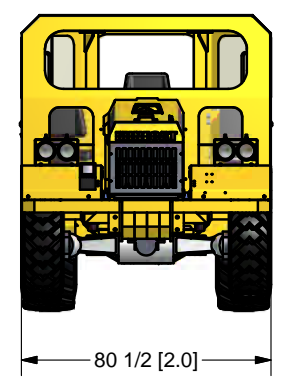


4 | 3 | 2 | 1



TOP VIEW SHOWN WITH CAB REMOVED



NOTE 1: DUE TO DESIGN UPGRADES SOME DIMENSIONS AND COMPONENTS MAY BE SUBJECT TO MINOR CHANGES

NOTE 2: OTHER OPTIONAL ACCESSORIES ARE AVAILABLE

SCALE:	MATERIAL:
DRAWN BY: T. LANGMAN	<p>UNLESS OTHERWISE NOTED TOLERANCING IS AS FOLLOWS: FRACTIONAL = +/- 1/16 1 DECIMAL = +/- .030 2 DECIMAL = +/- .010 3 DECIMAL = +/- .005 BREAK ALL SHARP EDGES</p>
REVIEWED BY:	
CHECKED BY:	
DATE: 14/07/2010	

Industrial Fabrication Inc.
 Sudbury, Ontario, Canada
 Phone: (705) 523-1621
 Fax: (705) 523-0565

TITLE MINECAT MC 100E 3 MAN CAB GENERAL ARRANGEMENT	
PART # IFID99201	REV

4 | 3 | 2 | 1